



BuLED

XSA-388 LED light accessory to replace MR16 fittings by Xicato XTM

Features VS Benefits

- * XSA-388 LED light accessory includes one LED cooler and one LED housing to be assembled with Xicato XTM LED modules to replace MR16.
- * Mechanical compatibility with direct mounting of the LED modules to the LED cooler and thermal performance matching the lumen packages.
- * Thermal resistance range R_{th} 4.2°C/W.
- * Xicato Thermal Class **D**, (60° tilt angle, 40°C ambient) .
- * The cooler design with mounting holes foreseen for direct mounting of Xicato XTM Modules .
- * Heatsink Diameter 48mm - Standard height 30mm , Other heights on request.
- * Housing Diameter 50mm - Standard height 45mm , Other heights on request.
- * Forged from highly conductive aluminum.



*The XSA-388 LED light accessory Xicato Pin Fin Heat Sink is standard foreseen from a variety of mounting holes which allow direct mounting of all Xicato XTM LED modules and secondary optics on the Pin Fin LED heat sink.

*In this way mechanical afterwork and related costs can be avoided, and lighting designers can standardize their designs on a limited number of LED coolers.

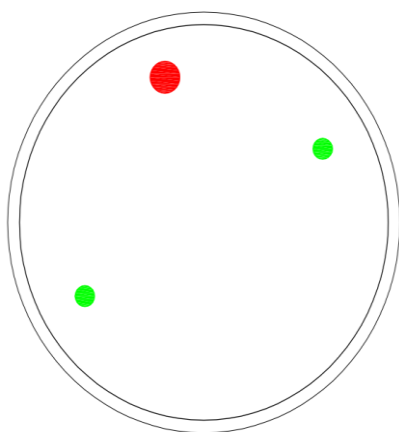
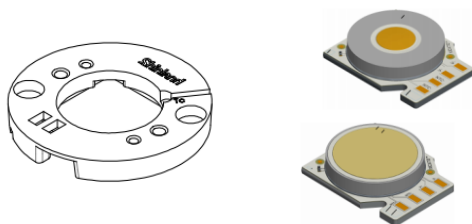
*Below you find an overview of Xicato LED modules which standard fit on the XSA-388 LED light accessory .

*MingFa performs thermal validation tests on each of the LED modules mounted on the LED cooler and publishes.

*This data in the Xicato Cooler thermal validation reports.

*For a full overview of available LED coolers for Xicato LEDs, please refer to the Xicato LED cooler overview on.

XICATO



XSA-388 LED light accessory, The Heatsink standard height 30mm for Xicato LED modules Mounting Options

Xicato XTM LED modules:

XTM19-8027-xxx ; XTM19-8040-xxx ;
XTM19-8030-xxx ; XTM19-V830-xxx ;
XTM19-8035-xxx ;

Direct mounting by Zhaga mounting holes with 2 screws M3 x 8mm;
with Shinland Zhaga holder.
Green indicator marks.

Mounting Options and Drawings & Dimensions

Example:XSA-388 -M3-B-2

Example:XSA-388-M3 - **1** - **2**

1 Anodising Color

B-Black

C-Clear

Z-Custom

2 Mounting Options - see graphics for

details Combinations available

Ex.order code - 12

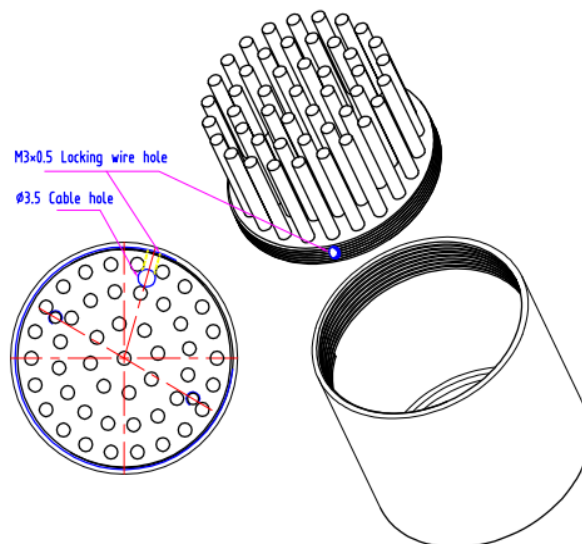
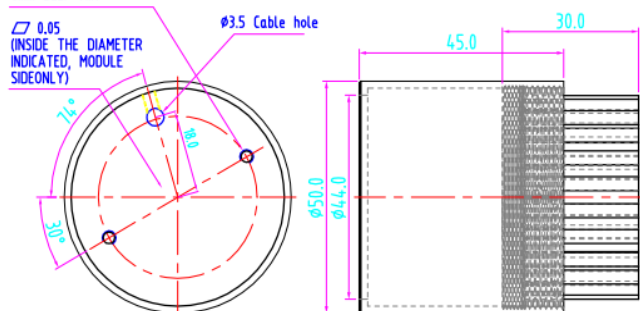
means option 1 and 2 combined

XICATO

MingFa recommends the use of a high Thermal conductive interface between the LED Module and the LED cooler. Either thermal grease, A thermal pad or a phase change thermal pad Thickness 0.1-0.15mm is recommended.

MOUNTING OPTION	PART NUMBER	THREAD	THREAD DEPTH
NONE	XSA-388-M3-#-N	NONE	NONE
1	XSA-388-M3-#-1	Φ3.5	Through-hole Cable hole
2	XSA-388-M3-#-2	M3*0.5	Locking wire hole
3			


XTM MOUNTING OPTION M3:
2X DRILL & TAP M3X0.5,
6mm DEEP MIN



BuLED

XSA-388 LED light accessory to replace MR16 fittings by Xicato XTM

The thermal data table

	
	<i>BuLED</i>
Model No.	XSA-388
Heatsink Size	Φ48xH30mm
Housing Size	Φ50xH45mm
Material (Heatsink + Housing)	AL 1070+ 6063-T5
Finish	Black Anodized
Weight(g)	75
Thermal Wattage	12W
HeatsinkOs-a²	14976
Thermal Resistance	4.2

Dissipated Power Pd(W)	Pd = Pe x (1-ηL)	Heat sink to ambient thermal resistance Rhs-amb (°C/W)	Heat sink to ambient temperature rise Ths-amb (°C)
		XSA-388	XSA-388
2.5W		6.8	17
4.5W		6.5	29
7.0W		5.7	40
9.5W		5.1	48
12.0W		4.2	50.5

